

Source: USGS 1:24,000, Palm Valley (1992) Quadrangle
 Section 39, Township 4 South, Range 29 East

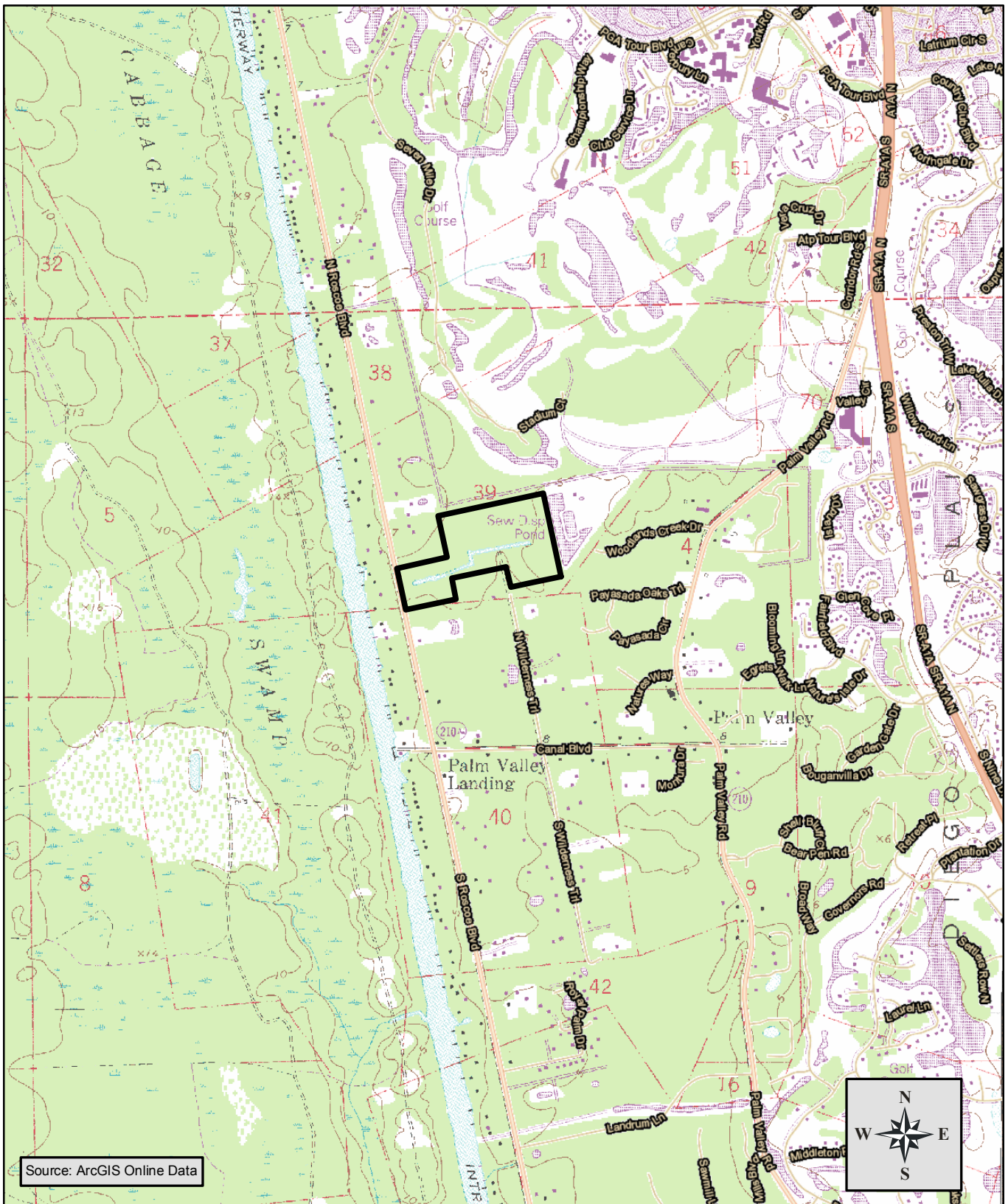
PEACOCK CONSULTING GROUP, LLC



12058 San Jose Boulevard, Suite 604, Jacksonville, Florida 32223
 (904) 268-1766 phone (904) 268-1729 fax

Oak Trail Preserve
 St. Johns County, Florida
Location/Topographic Map

Figure:	1
Scale:	1"=2000'
Date:	October 2016



Source: ArcGIS Online Data

PEACOCK CONSULTING GROUP, LLC



12058 San Jose Boulevard, Suite 604, Jacksonville, Florida 32223
 (904) 268-1766 phone (904) 268-1729 fax

Oak Trail Preserve

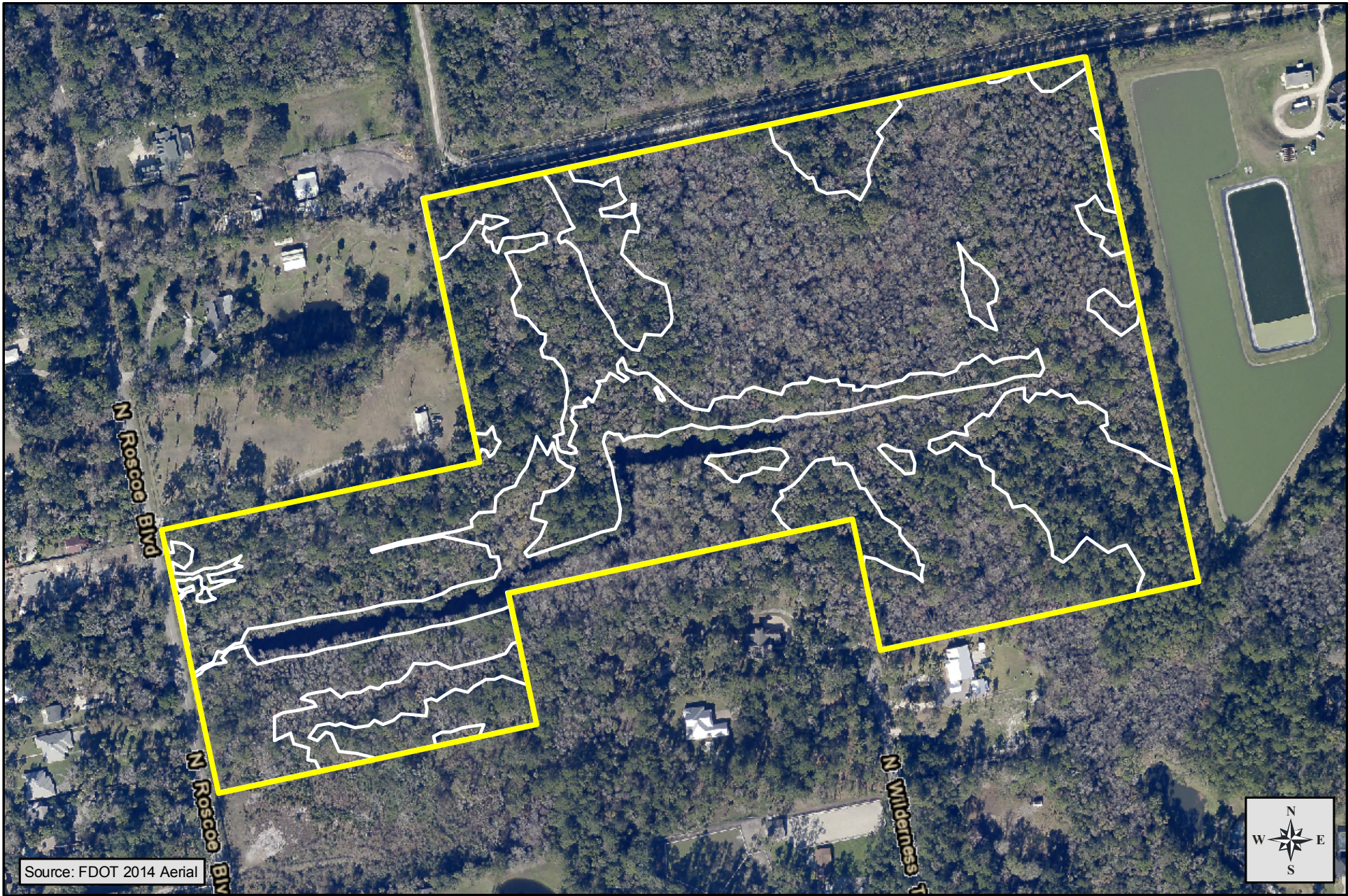
St. Johns County, Florida

Vicinity Map

Figure: 2

Scale: 1"=2000'

Date: December 2016



Source: FDOT 2014 Aerial

PEACOCK CONSULTING GROUP, LLC



12058 San Jose Boulevard, Suite 604, Jacksonville, Florida 32223
 (904) 268-1766 phone (904) 268-1729 fax

Oak Trail Preserve

St. Johns County, Florida

Current Aerial Photograph with Surveyed Wetland Lines

Figure:	3
Scale:	1"=300'
Date:	October 2016

Legend:

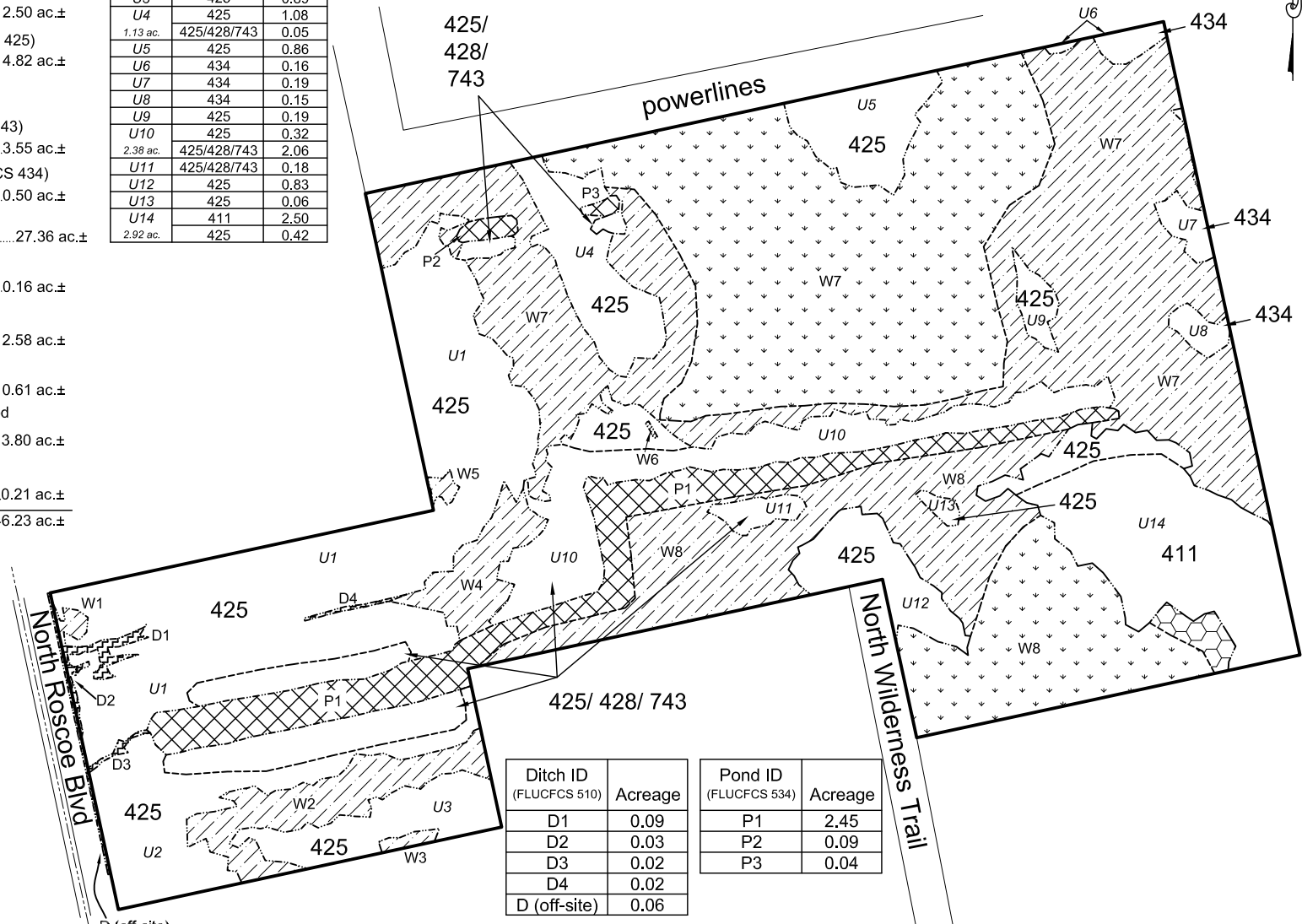
- Project Boundary
- Wetland Line
- Vegetative Community Break
- Uplands:.....18.87 ac.±
- 411 - Pine Flatwoods (FLUCFCS 411)2.50 ac.±
- 425 - Temperate Hardwoods (FLUCFCS 425)14.82 ac.±
- 425/428/743 - Temperate Hardwoods (FLUCFCS 425), Cabbage Palm (FLUCFCS 428), Spoil (FLUCFCS 743)3.55 ac.±
- 434 - Hardwood-Conifer Mixed (FLUCFCS 434)0.50 ac.±
- Wetlands and Other Surface Waters:.....27.36 ac.±
- Ditches (FLUCFCS 510)0.16 ac.±
- Reservoir/Man-Made Pond (FLUCFCS 534).....2.58 ac.±
- Inland Ponds and Sloughs (FLUCFCS 616).....10.61 ac.±
- Mixed Hardwoods/Hydric Hardwood Hammock (FLUCFCS 617).....13.80 ac.±
- Pine-Cabbage Palm Wetland (FLUCFCS 624).....0.21 ac.±
- Total: 46.23 ac.±**

Upland ID	FLUCFCS	Acreage
U1	425	6.02
6.50 ac.	425/428/743	0.48
U2	425	1.65
2.43 ac.	425/428/743	0.78
U3	425	0.89
U4	425	1.08
1.13 ac.	425/428/743	0.05
U5	425	0.86
U6	434	0.16
U7	434	0.19
U8	434	0.15
U9	425	0.19
U10	425	0.32
2.38 ac.	425/428/743	2.06
U11	425/428/743	0.18
U12	425	0.83
U13	425	0.06
U14	411	2.50
2.92 ac.	425	0.42

Wetland ID	FLUCFCS	Acreage
W1	617	0.06
W2	617	1.05
W3	617	0.06
W4	617	0.66
W5	617	0.05
W6	617	0.005
W7	616	7.98
16.66 ac.	617	8.68
W8	616	2.63
	617	3.23
6.07 ac.	624	0.21

Ditch ID (FLUCFCS 510)	Acreage
D1	0.09
D2	0.03
D3	0.02
D4	0.02
D (off-site)	0.06

Pond ID (FLUCFCS 534)	Acreage
P1	2.45
P2	0.09
P3	0.04



C:\BDF\GRAPHICS\Byron_Graphics\2015\North_Wilderness_Trail\OTF_010817.dwg Existing: 1/10/2017 8:52:04 AM

PEACOCK CONSULTING GROUP, LLC







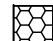


12058 San Jose Boulevard, Suite 604
Jacksonville, Florida 32223
(904) 268-1766 phone (904) 268-1729 fax

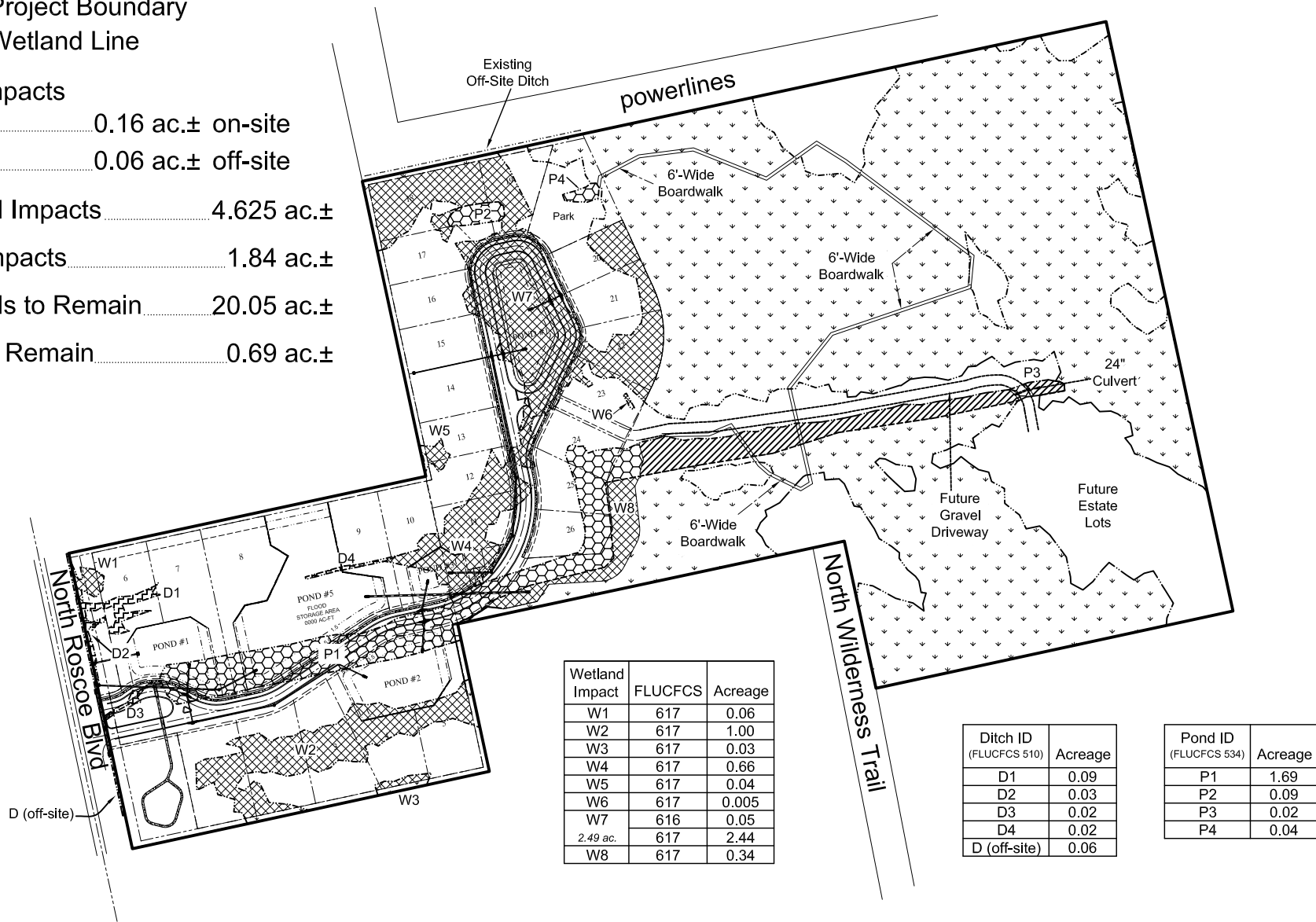
Oak Trail Preserve

St. Johns County, Florida
Existing Site Conditions

Figure:	4
Scale:	1"=300'
Date:	January 2017

Legend:

-  - Project Boundary
-  - Wetland Line
-  - Ditch Impacts
 -  0.16 ac.± on-site
 -  0.06 ac.± off-site
-  - Wetland Impacts 4.625 ac.±
-  - Pond Impacts 1.84 ac.±
-  - Wetlands to Remain 20.05 ac.±
-  - Pond to Remain 0.69 ac.±



Wetland Impact	FLUCFCS	Acreage
W1	617	0.06
W2	617	1.00
W3	617	0.03
W4	617	0.66
W5	617	0.04
W6	617	0.005
W7	616	0.05
2.49 ac.	617	2.44
W8	617	0.34

Ditch ID (FLUCFCS 510)	Acreage
D1	0.09
D2	0.03
D3	0.02
D4	0.02
D (off-site)	0.06

Pond ID (FLUCFCS 534)	Acreage
P1	1.69
P2	0.09
P3	0.02
P4	0.04

C:\BDFE\GRAPHICS\Byron_Graphics\2015\North_Wilderness_Trail\OTF_011217.dwg, Proposed, 1/15/2017 1:57:09 PM

PEACOCK CONSULTING GROUP, LLC



12058 San Jose Boulevard, Suite 604
Jacksonville, Florida 32223
(904) 268-1766 phone (904) 268-1729 fax

Oak Preserve Trail

St. Johns County, Florida
Proposed Site Conditions

Figure:	5
Scale:	1"=300'
Date:	January 2017